

4 Days Guilin & Yangshuo – Photography, Rice Terrace & Private Bamboo Rafting

Specially Prepared for SEA
Small Group Tour (4-7SEP, 2017)



Tour Price:

Twin Sharing: **RMB 7,260 /-** per person

Supplement: **RMB 1,280 /-** per person

Travel Date: 4-7 Sep, 2017

Registration Closing Date:

4 Aug, 2017 or when tour is fully subscribed

Deposit Amount:

RMB 4,000/- per person

Early Bird Promotion:

Discount of **RMB 300/-** person if book with deposit by 4 Jul, 2017

Pre-Departure Meeting: 24 Aug, 2017

Highlights:

- Appealing picturesque landscape and cultural spots

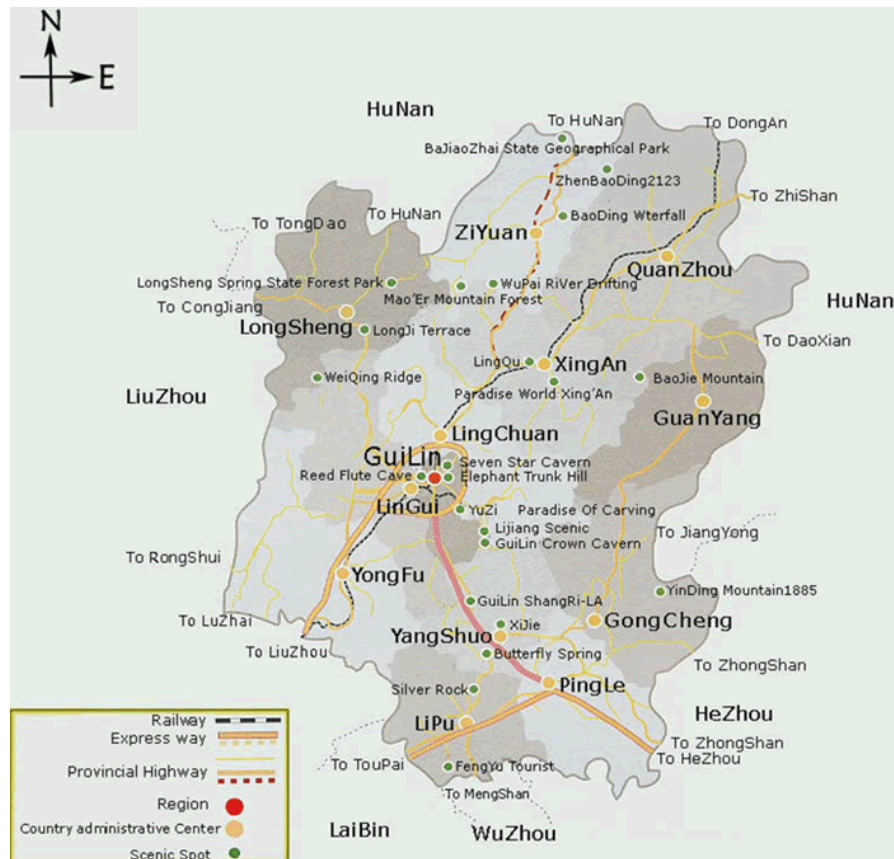
- Visit Guilin at golden time to visit rice terrace

- Li River cruise and watch "Impression of Liu San Jie" show

- A non-alcoholic drink or beer is included during meals as stated

- Small group size of maximum 16 persons

Itinerary summary and map



Guilin scenery tops the world! Hundreds of towering limestone peaks jutting out of verdant rice paddies, quaint Chinese villages set by the lovely Li River, stunning rice terraces, local market and the warmth of the people. Guilin is indeed not to be missed for lover of pristine natural beauty.

Apart from Guilin itself, we also explore the stunning rice terraces of Longsheng where you will come across the ethnic minorities of Zhuang & Yao. Besides, this creatively crafted itinerary also takes you away from the usual tourist trails to enjoy the best of Guilin not seen by most. You can hike or bike along trails past lovely villages untouched by China's fast pace modernization.



Detailed Itinerary

DAY01
4SEP/MON



SHANGHAI/GUILIN/LONGSHENG

Fly Shanghai - Pudong /Guilin

FM9379 0835/1120

Upon arrival in Guilin, be met and transfer to **Longsheng**.

Longsheng is located in the mountainous region on the northeastern part of Guilin. The natural beauty and the colorful ethnic minority's cultures and customs attract people from all over the world.

After 2.5 - hour drive (115 km of beautiful mountain road), arrive at **Ping An village**, walk 30 minutes to Star Wish Hotel on **Longji** (Dragon backbone) rice terrace.

Visit the **Zhuang and Yao Minority Tribes' village**. The local girls dressed in their own colors can have a demonstration on hair combing or singing and dancing upon guests' request and gratuity. You will enjoy the beautiful terrace rice fields from the summit of Longji. The terrace rice fields were first built in the Yuan Dynasty (about 800 years ago) and completed in the Qing dynasty as the crystallization of the wisdom and labor of the Zhuang people. The terraced fields winds from the river at 380m to an elevation of 885m. Enjoy the hiking tours around Ping An village for the wonderful views.

Overnight at Longsheng

Meals: Lunch Included

DAY02
5SEP/TUE



LONGSHENG/GUILIN

Get up in the green with refreshing air, encounter kids climb down miles to the school. If you are energetic, may want to hike up to the top of the mountain with guide, or stop somewhere and back to your hotel according to your physical condition.

After check out from hotel, we will drive about 3 hours back to Guilin, visit **Fubo Hill** stroll along the pathways to see intricate carvings and stone Buddha's dating back to the Tang Dynasty. A picturesque Li River view will be caught if you climb up to top of the peak.

You have the rest of the day at leisure to explore **Banyan Lake** or **night market** near your hotel.

Overnight at Guilin

Meals: Breakfast & lunch included

DAY03
6SEP/WED



GUILIN/YANGTI/XINGPIN/YANGSHUO

Adventure private bamboo rafting with simple lunch included: (Subject to weather permit, avoid rain season in Jun, Jul, equipped with a boatman and life jacket)

This morning drive 1.5 hours to the pier of **Yangti** then take a **bamboo rafting** (maximum 4 person per raft, depend on the weather) cruise down the picturesque **Li River**. This is perhaps the most scenic part of Guilin as you glide past hundreds of limestone peaks, luxuriant green paddies and lovely villages, you will stop at scenic spot take photo when pass through some rural villages, packed lunch included.

The cruise takes about 1.5 hours, ends at Xingping around 1:00PM, spend some time stroll on the **Xinping old town** before leave to Yangshuo, en - route we stopover in **Fuli town** which is a small town on the east bank of the Li River famous for "painted paper fans"

If weather no permit, we will take the big ferry instead, drive 1 hour to the pier and cruise down the picturesque Li River. The cruise is about 4 hours and arrives at Yangshuo in early afternoon.

After checking your hotel, explore this 900 years old town, today it has become a charming tourist Mecca with cafe, shops and restaurants set by the beautiful river.

Tonight, we strongly recommend the show "**Impression of Liu San Jie**" choreographed by the famous movie conductor -**Zhang Yimo** with hundreds of dancers performing and using Guilin's beautiful scenery as the backdrop.

(There are three levels seat: Basic - RMB198 plastic chair without back, VIP - RMB 320, rattan chair with back, president seat - RMB 680, rattan chair with adjustable back, snacks and tea provided, **our tour includes a VIP seat ticket**).

Overnight at Yangshuo

Meals: Breakfast & lunch included

DAY04
7SEP/THU



YANGSHUO/GUILIN/SHANGHAI

This morning, we will set off from Yangshuo for a **guided biking tour** to visit the authentic villages, on the way see buffalo plowing, farmer working as the background of mountain reflecting in the water. Continue bike to **Yulong River**, unlike busy Li River it has no motorized boat traffic and relies completely on bamboo rafts to ferry passengers downriver, we will stop here for photo taking, image the scatter group of houses, green field, a miniature picture under the mountain.

Then bike back to Yangshuo and transfer to your hotel for fresh up, have lunch after check out from the hotel, rest of the time free and easy till drive back to Guilin fly to Shanghai.

Fly Guilin/Shanghai - Pudong FM9370 1925/2140

Meals: Breakfast and lunch Included

QUOTATION

PRICES PER PERSON:

- This trip requires minimum 6 adults to run;

Hotel Selected	Per adult on twin sharing	Per child on twin sharing	Single Supplement
Based on 6-9 people Starwish Guesthouse Longji(Lucky B Room) Sheraton Guilin (Elegant Room) Yangshuo Resort (Riverview Room)	RMB 7,750/-	RMB 5,950/-	RMB 1,280/-
Based on 10-16 people Starwish Guesthouse Longji(Lucky B Room) Sheraton Guilin (Elegant Room) Yangshuo Resort (Riverview Room)	RMB 7,260/-	RMB 5,550/-	RMB 1,280/-
Notes: <i>Only twin room provided in Starwish Guesthouse in our package.</i> <i>Flight schedule is subject to change when make actual booking.</i> Early Bird Reward: receive a discount of RMB 300/-per person for booking this trip with deposit by 4 Jul, 2017 Reservation closing date: 4 Aug,2017 Pre-departure meeting: 21 Aug, 2017			

COST INCLUDES

- Airfare: Shanghai/Guilin/Shanghai on economy class;
- Airport taxes and fuel surcharges;
- Accommodation on twin or double sharing basis;
- All tours and transfers by private car with an English speaking tour guide;
- Meals as stated & daily bottled water;
- Entrance fees as stated in the itinerary;
- Show tickets; porter fees for Longji
- Travel Insurance.

COST EXCLUDES

- Beverages in the restaurants where meals are included;
- Gratuities to guide & driver.
- Personal and other expenses not stated in the itinerary.

HOTEL DESCRIPTIONS



In Longsheng

Starwish Guesthouse: A 5-storey building with typical Chinese Zhuang minority resident style architecture - wooden storied house. This guest house is clean and cozy, and sitting on almost top of the mountain, surrounded by the rice terraces.

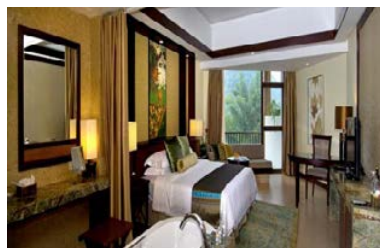
https://www.tripadvisor.com/Hotel_Review-g1159371-d1732115-Reviews-Longji_Star_wish_Resort-Longsheng_County_Guangxi.html



In Guilin

Sheraton: Ideally located along the Li River in the heart of the enchanting city of Guilin, 10-minute walk to the night market.

<http://www.starwoodhotels.com/sheraton/property/overview/index.html?propertyID=483>



In Yangshuo

Yangshuo Resort: The Hotel is the ideal place to feel and taste the Yangshuo charms of the Yulong River and countless peaks. The guest-rooms, all fully equipped with modern amenities.

<http://www.yangshuoresort.com.cn/en/index.asp>

To sign up for the trip, please contact us at:
Shanghai Office

Tel: (86-21) 3222 0616 Fax: (86-21) 6247 4166

Email: enquiries@countryholidays.com.cn

Add: Unit 1905, LL Land Plaza, #580 West Nanjing Road, Shanghai

